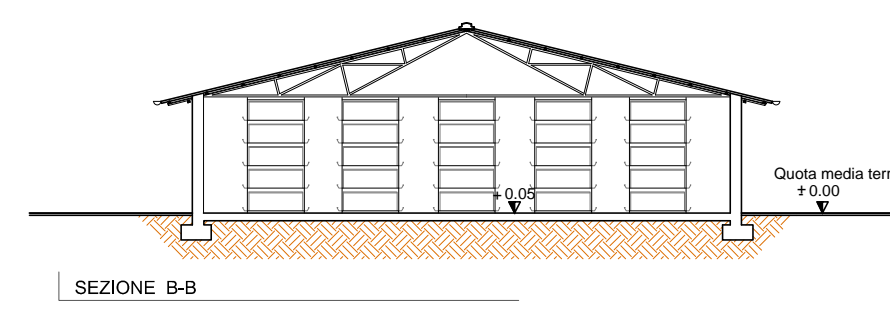
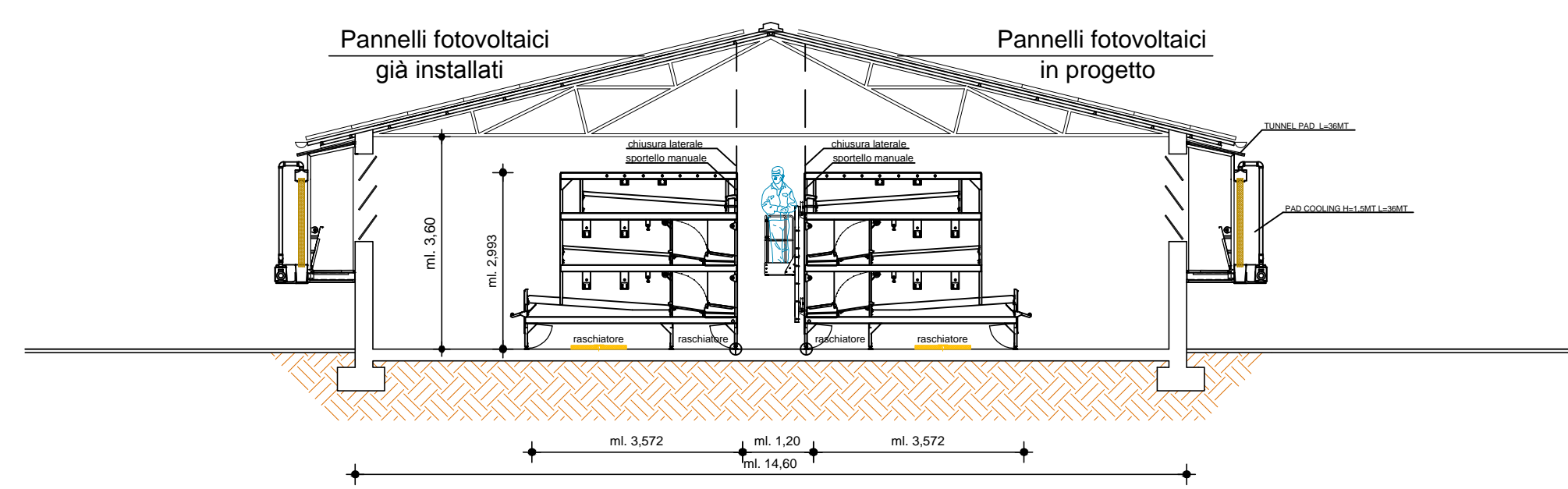
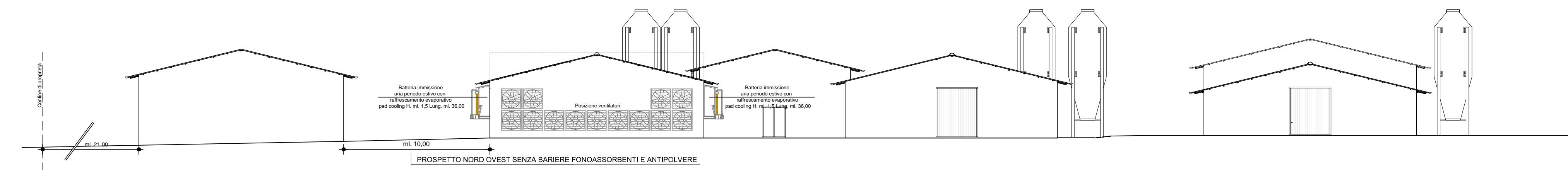
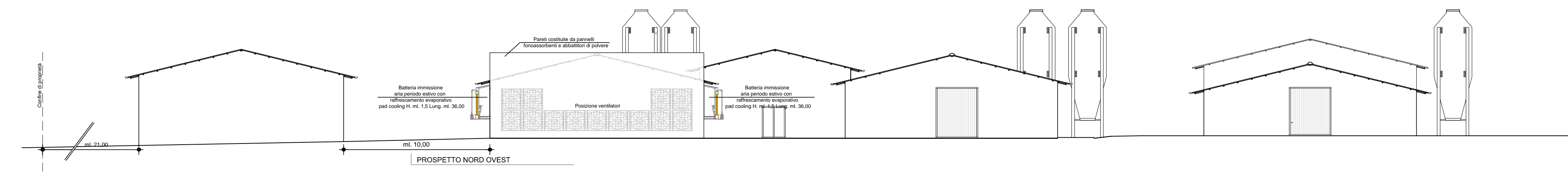
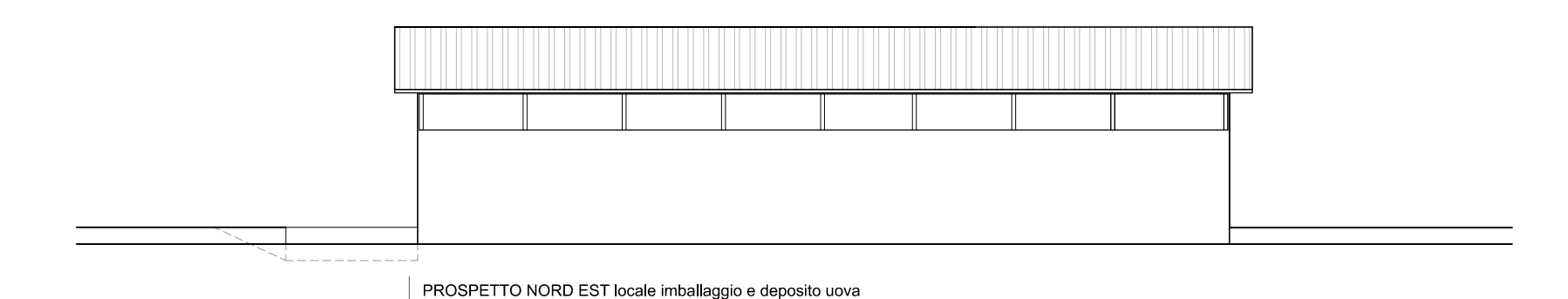
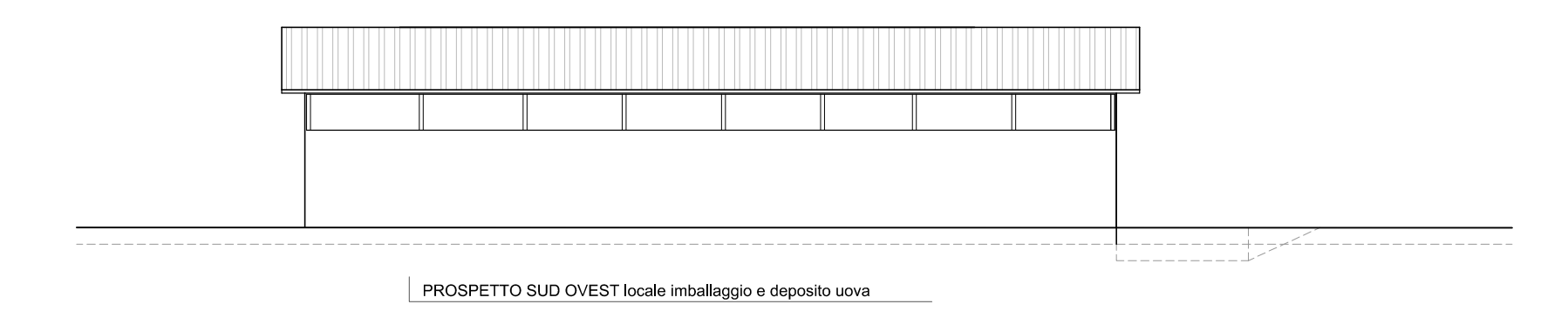
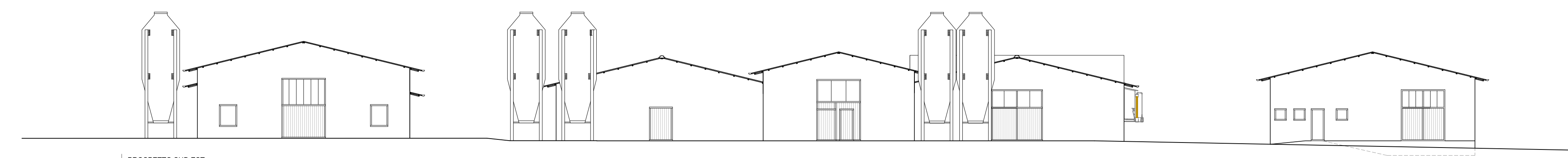
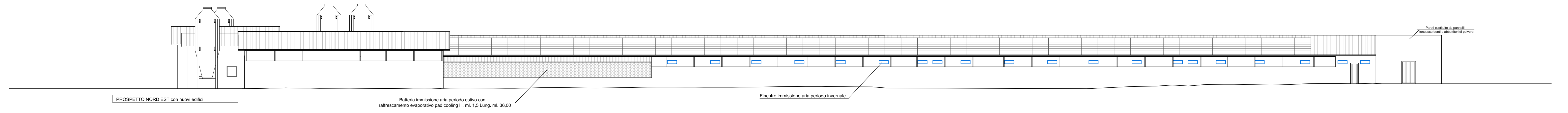
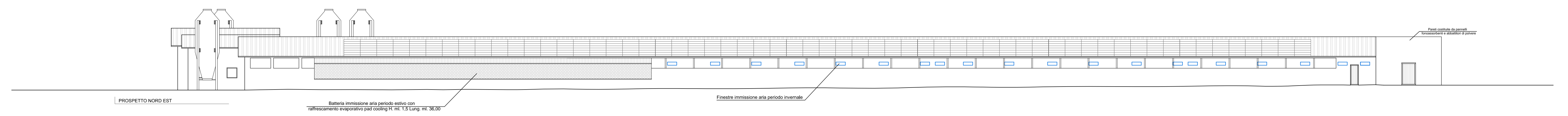
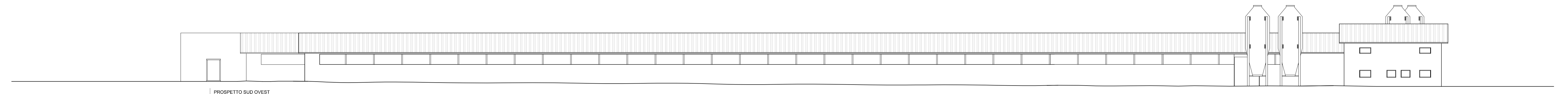
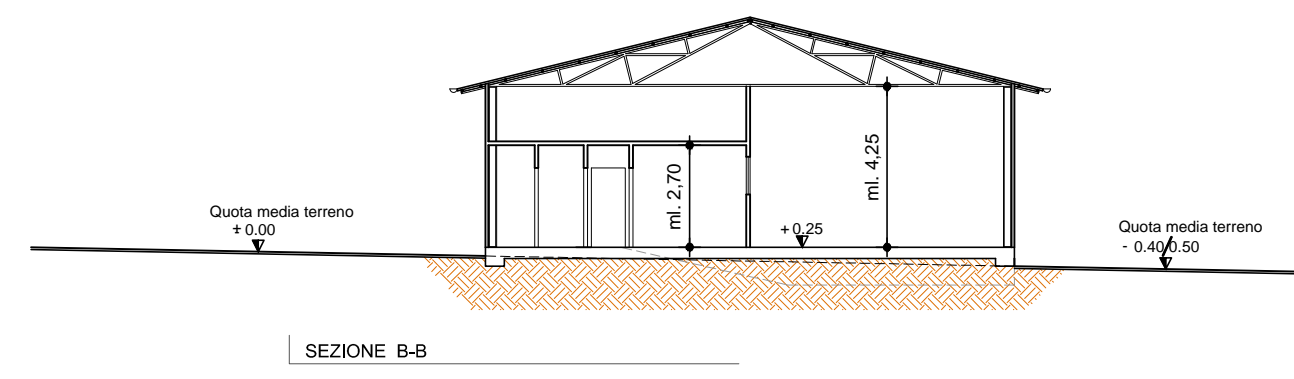
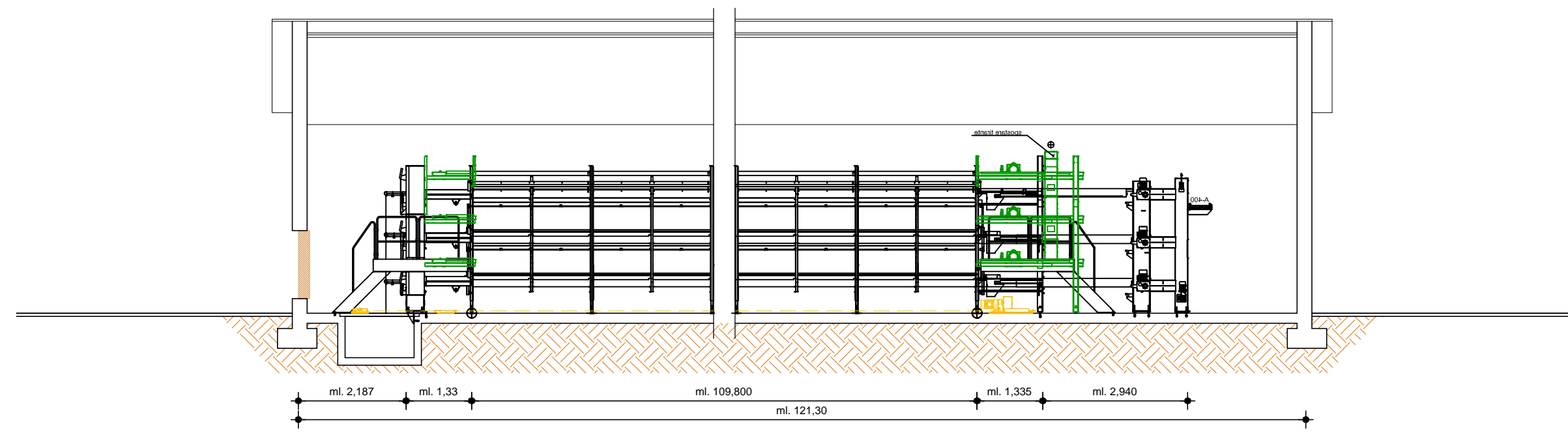


Particolare sezione trasversale A-A capannone 3 (scala 1:100)



Particolare longitudinale capannone 3 (scala 1:100)



	<b>Studio Tecnico Pascon Geom. Fausto</b> SAN VENEMIANO Piazza San Pietro 45 - Tel. 3477190294 - e-mail pasconfausto@libero.it	Provincia di Treviso
	Comune di Cordignano	Tavola n. 4/2 Il Progettista
Progetto di riqualificazione fabbricato agricolo ad uso allevamento galline ovaiole a terra e realizzazione nuovo magazzino-deposito uova		Ditta : Tomè società agricola s.s.
PROSPETTI PROGETTO		Scala 1:200 - 1:500 - 1:2000 Data Ref. 001-11-2022
Comune di Cordignano Sez. C Fg. 5° mapp. 63 sub. 11 - 12		A meno di legge in materia la presente è questo disegno con divieto di riprodurlo o renderlo comunque noto a terzi senza autorizzazione scritta.